



SCIOLOGEX
CENTRIFUGES

CENTRIFUGES



Company Profile

GPE Scientific Ltd was established in 1962 and is a leading distributor and manufacturer of laboratory equipment, glass blowing products and specialised glass components for the industrial, laboratory and research markets. We pride ourselves in stocking thousands of products from leading suppliers providing you with the best selection of laboratory equipment on the market.

We are the exclusive UK and Ireland distributor for the Scilogex range of Benchtop Equipment. Scilogex is a brand of innovative and unique laboratory products for all areas of chemistry research. Our goal is to provide you with great products at highly competitive prices.



Centrifuges

D1008

EZee Mini-Centrifuges

Features:

- Ideal for microfiltration and quick spin-downs
- Easy-to-use with dual start/stop function
- 10,000 rpm fixed speed (D1008U)
- 7,000 rpm fixed speed (D1008)
- 5,000 rpm fixed. speed (D1008E)
- Equipped with 2mL x 8 and PCR8 x 2 rotors
- Quiet ≤ 45 dB
- Rotor change without tools
- Accelerates and brakes in seconds
- Four colours with green, blue, yellow and pink
- Multi-voltage



D1008

CE "explosion-proof" tested in accordance with IEC/EN61010-2-20

Specifications:

	D1008 (Blue)	D1008 (Green)	D1008E (Pink)	D1008E (Yellow)
Cat No	91433141	91434141	91435141	91436141
Max. Speed (rpm)	7000	7000	7000	7000
Max. RCF (xg)	2680	2680	2680	2680
Rotor Capacity	0.2/0.5/1.5/2.0mLx8; 0.2mLx16 PCR strips or 0.2mLx2 PCR 8 strips	0.2/0.5/1.5/2.0mLx8; 0.2mLx16 PCR strips or 0.2mLx2 PCR 8 strips	0.2/0.5/1.5/2.0mLx8; 0.2mLx16 PCR strips or 0.2mLx2 PCR 8 strips	0.2/0.5/1.5/2.0mLx8; 0.2mLx16 PCR strips or 0.2mLx2 PCR 8 strips
Run Time	Continuous operation	Continuous operation	Continuous operation	Continuous operation
Driving Motor	DC motor	DC motor	DC motor	DC motor
Power	AC110- 240V/50Hz/60Hz	AC110- 240V/50Hz/60Hz	AC110- 240V/50Hz/60Hz	AC110- 240V/50Hz/60Hz
Noise level (dB)	≤ 45	≤ 45	≤ 45	≤ 45
Dimensions (D x W x H mm)	160 x 170 x 122	160 x 170 x 122	160 x 170 x 122	160 x 170 x 122
Weight (kg)	0.5	0.5	0.5	0.5



Available rotors and adapters:

Centrifuges	D1008	
		
Rotor P/N	A08-2	A02-PCR8
Cat No.	19400015	19400017
Max. speed (rpm)	10000/7000/5000	10000/7000/5000
Max. RCF (xg)	5460/2680/1360	5460/2680/1360
Rotor Capacity	2mL/1.5mLx8 0.2mLx8 0.5mLx8	0.2mLx16 PCR strips 0.2 mLx2 PCR 8 strips
Rotor Material	High strength plastic	High strength plastic
Bio-safe (Bio sealing)	N/A	N/A
Available rotor adapters	N/A	
SA02P2	•	
SA05P2	•	



Available rotors and adapters:

P/N	Cat No.	Descriptions
SA02P2	19200029	2mL to 0.2 mL rotor adapter; used with A08-2 rotor; 8pcs/pk
SA05P2	19200026	2mL to 0.5 mL rotor adapter; used with A08-2 rotor; 8pcs/pk



High Speed Multi-Purpose Centrifuges

D1536

High Speed Multi-Purpose Centrifuge

The D1536 Multi-purpose Centrifuge is ideal for sample centrifugation in clinical chemistry labs, cytology labs, pharmaceutical and biotechnology labs.

Features:

- Speed range from 300 rpm to 15,000 rpm
- Maximum capacity: 100 mL x4
- 9 Acceleration/10 Brake speed settings guarantees effective sample separation
- Versatile range of accessories (swing-out and fixed-angle rotors)
- Automatic rotor identification
- Different timer options
- Quiet ≤ 45
- Memorises 9 different settings
- Brushless DC motor is maintenance free and safe

Cat No:
D1536

D1536

Advantages:

The D1536 Multi-purpose centrifuge is designed with various fixed-angled rotors, swing-out rotors and an extensive range of adapters.

Swing-out rotor and adapters are designed for standard tubes (up to 100 mL at low speeds) and the centrifuge can be used for micro-plates, tubes with a screw cap, blood collection tubes or cytology accessories.

The fixed-angled rotors can reach up to 15,000 rpm, which is ideal for physical and chemistry analysis, biochemistry research, cellular and molecular biology research, clinical labs, blood donation and high-end research applications.





High Speed Multi-Purpose Centrifuges

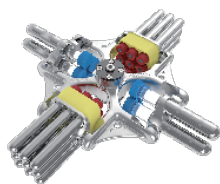
Specifications:

Speed Range (rpm)	300 - 15,000
Speed Accuracy (rpm)	±20
Max. RCF (xg)	24000
Speed/rcf Switch	Yes
Run Time	1 min - 99 min - or press HOLD (Continuous operation)
Display	LCD
Programs	9
Rotor Identification	Yes
Accel/braking ramps	9 ↑ / 10 ↓
Motor	Brushless DC motor
Safety Devices	Door interlock, maximum speed controls; motor overheating detection; internal diagnostics



Rotor Features:

1



Swing-out rotor, stainless steel body and tubes

Major application: Large particles, cells and cell debris and clinical application

Max speed: 4,000 rpm, Max Rcf: 2,830×g.

Cat No: S4 - 100
100mL×4



Capacity in mL	3-10 mL Blood collection tube		10 mL Blood collection tube	12 mL urine tube	15mL	50mL	100mL
φ×L mm	13×75	13×100	15×100	17×105	17×120	34×100	38×104
Tubes per rotor	36	36	16	16	16	4	4

2



Fixed angled rotor, aluminium body and stainless tubes.

Major application: Large particles, cells and cell debris, clinical application

Max speed: 4000 rpm, max Rcf: 2110 ×g

Cat No: 30-15
15mL×30

Capacity	3-10 mL Blood collection tube	10 mL Blood collection tube	12 mL urine tube	15mL
φ×L mm	13 × 75	13 × 100	17 × 105	17 × 120
Tubes per rotor	30	30	30	30

3



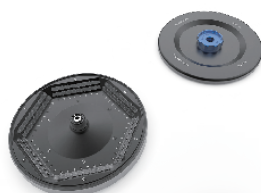
Cat No: AS6-S0V
50mL×6

Fixed angled rotor, aluminium body.

Major application: cell pelleting, separation of DNA, proteins and viruses

Max speed: 11,000 rpm; Max Rcf: 15500×g.

4



Cat No: AS12-PCR8
pcr 8 trips×12

Fixed angled rotor, aluminium body.

Major application: PCR application

Max speed: 12,000 rpm; Max Rcf: 13800×g.

5



Cat No: AS30-2
2mL×30

Fixed angled rotor, aluminium body.

Major application: subcellular organelles pelleting, nucleic acids, viruses and bacteria

Max speed: 15,000 rpm; Max Rcf: 25150×g.

6



Cat No: S2-MP
Micro-plants

Micro-plate rotor, stainless steel body and aluminium buckets.

Major application: 384-PCR, 96-PCR

Max speed: 4,000 rpm; Max Rcf: 2200×g.

High Speed Micro-Centrifuges

High Speed Micro Centrifuge:

High speed micro-centrifuges are widely used in physical and chemistry analysis, biochemical labs, cellular and molecular biology research, clinical labs, blood donation centers and is ideal for high-end research applications.

Designed for;

- Sedimentation of cells and viruses
- Separation of subcellular organelles
- Isolation of macromolecules such as DNA, RNA, proteins or lipids

Precise control:

- Brushless DC motor accelerates quickly and effortlessly to set speed
- Highly accurate (± 0 rpm)
- 30 seconds to 99 minutes operation time (can also be set for continuous operation)
- Timer starts once the target speed is reached for accurate sample separation

Safety Controls:

Conforms to international safety standards and regulations:

SCILOGEX centrifuges are tested by TÜV Rheinland company (Germany) and our Centrifuges have passed the CB scheme and marked with CE, cTÜVus and FCC

Centrifuges are calibrated in accordance with IEC/EN 61010-1 and MCA tests according to IEC/EN61010-2-20, including "explosion-proof" and bio-safe tests

Advantages:

- Quiet and stable operation
- Secure strong metal casing
- Dual door interlock system designed for safety (D3024 & D3024R)
- Gentle braking system

Ergonomic design:

- User-friendly large LCD display
- Both RPM or G-force can be set and displayed
- Parameters can be modified after set speed is reached
- The short spin function is used for quick spins (by pressing and holding the PULSE key)
- Lid automatically opens when run is complete – prevents the machine from overheating and allows easy access to samples (excluding D3024R)
- Easy-to-read display and sound alerts



D2012 High Speed Mini Centrifuge

Powerful personal centrifuge:

- Powerful centrifugal force 15,100xg
Max speed 15,000 rpm
- Brushless DC motor accelerates effortlessly
- The rotor is designed for 1.5/2.0mL tubes and smaller 0.2mL and 0.5mL tubes (through use of adapters)

Conforms to international safety standards and regulations:

- D2012 conforms to IEC/EN 61010-1
- Cast iron chassis with low gravity provides stability and reliability, (even at maximum speed)

Cat No:
91131541



Aluminium alloy rotor
is fully autoclavable

D2012
With A12-2 aluminium alloy rotor kit



High Speed Micro-Centrifuges

D3024

High Speed Micro Centrifuge



2-point lid-lock mechanism – ensures secure closure. Lid automatically opens when finished

Aluminium alloy rotor can be fully autoclaved with unlimited usage

Special multi-flow air cooling design helps keep lower rotor temperature

Intuitive symbols – displays current status

Full-digital display (rpm/Rcf) – easy identification of parameters

Centrifuge self diagnoses: displays accumulative running time and last running parameters

Short spin function is used for quick spins; activated by pressing and holding the PULSE key



Special multi-flow air cooling design protects sensitive samples (D3024)

FastTemp function available for fast pre-cooling and accurate temperatures (D3024R)





Unique Features:

Special multi-flow air cooling design helps keep lower temperatures

Unique cooling system minimizes rotor overheating by maintaining a constant 10°C (even after running for an hour)

Rotor capacity:

Bio-safe rotor - ensures no sample overflow

Strong aluminium rotor can be fully autoclaved

Four optional rotors: comes with 24 tubes (1.5/2.0mL) and smaller 0.2mL/0.5mL tubes with adapters

Cat No:
91231512

D3024

With AS24-2 aluminium alloy rotor kit



High Speed Micro-Centrifuges

D3024R

High Speed Refrigerated Micro Centrifuge



Locked lid (when in use) to keep a consistent chamber temperature and protect sensitive samples

FastTemp function for fast pre-cooling and maximum accuracy

Powerful and efficient cooling system quickly cools down chamber to 2°C in only 7 minutes. Centrifuge keeps sample temperature under 2°C, even at maximum speed

Powerful and efficient cooling system:

- Pre-cooling system keeps the chamber at a pre-set temperature
- Powerful and efficient cooling system quickly cools down chamber to 2°C in only 7 minutes. Centrifuge keeps sample temperature under 2°C (even at maximum speed)
- Locked lid (when in use) to keep a consistent chamber temperature and protect sensitive samples against contamination
- Temperature controlled, CFC-free refrigerator and low carbon life

Cat No:
92231512

Rotor capacity:

- Bio-safe rotor - ensures no sample overflow
- Strong aluminium alloy rotor can be fully autoclaved
- Four optional rotors, comes with 24 tubes (1.5/2.0mL) (smaller 0.2mL / 0.5mL tubes can be used with adapters)



D3024R

With AS24-2 aluminium alloy rotor kit





Rotor Features:

Fully autoclavable rotors:

SCILOGEX rotors are manufactured with precise military-industrial-grade aluminium alloys - (excludes D2012 plus rotor)

Strong aluminium alloy rotors are fully autoclavable. The rotors can be steam sterilized for 20 minutes at 121°C

Bio-safe rotors:

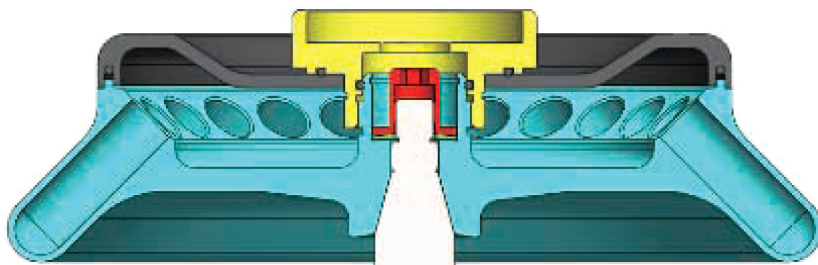
- All rotors can reach 15,000 rpm (maximum speed)
- Rotors are seated on a tapered shaft, concentric and self-aligning, for running stability at high speeds
- D3024 & D3024R centrifuges come with bio- safe rotors/anti-sample overflow systems. Designed to ensure samples do not leak during the centrifugal process, which may cause microbial contamination. **D3024** & **D3024R** rotors have passed MCA tests according to IEC/EN61010-2-20 (including explosion-proof and bio-safe tests)
- Strong aluminium alloy rotors are fully autoclavable and provide unlimited usage (excludes D2012 plus rotor)
- A powerful and efficient cooling system minimizes rotor heating

D3024 & D3024R rotors are designed to prevent sample leakage. There are three rubber seals fitted in the rotor

"Explosion-proof" tested:

SCILOGEX centrifuges are checked under MCA conditions IEC/EN61010-2-20. Guaranteed protection against rotor detachment

There are three rubber seals fitted within the rotor



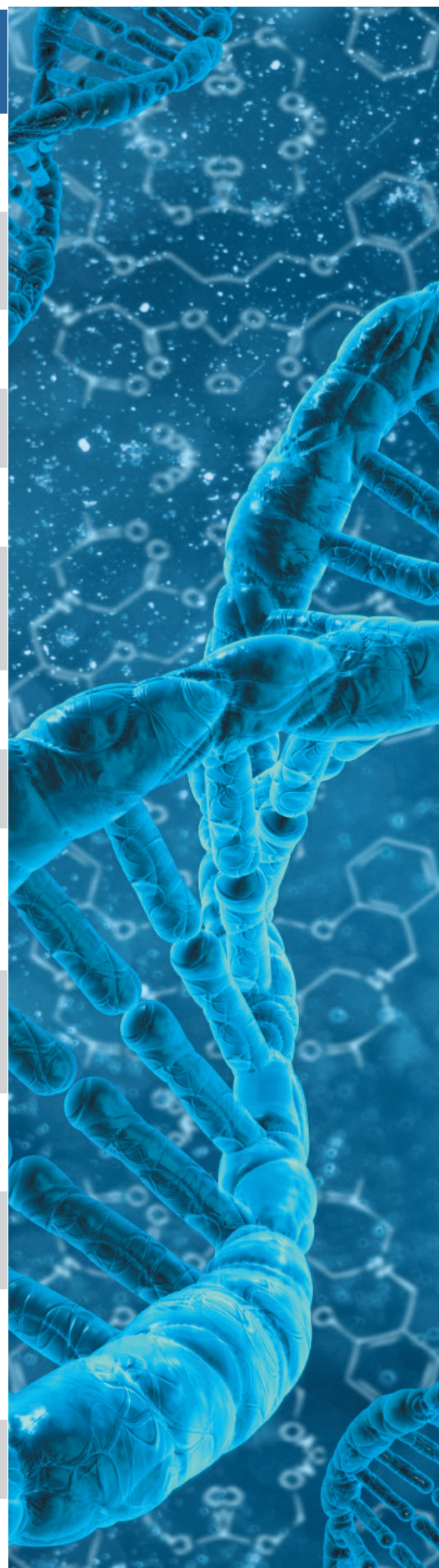
Bio-safe seals located in alloy rotor



High Speed Micro Centrifuges

Specifications:

	D2012	D3024	D3024R
Cat Number	91131541	91231512	92231512
Max. Speed (rpm)	15,000 rpm (500-15,000 rpm), increment: 100 rpm	15,000 rpm (200 - 15,000 rpm), increment: 10 rpm	15,000 rpm (200 - 15,000 rpm), increment: 10 rpm
Max. RCF (xg)	15100 x g, increment: 100xg	21380 x g, increment: 10xg	21380 x g, increment: 10xg
Speed Accuracy (rpm)	±20 rpm	±20 rpm	±20 rpm
Temperature Range	N/A	N/A	-20°C up to 40°C
Rotor Capacity	0.2mL/0.5mL/1.5mL/2mLx12	5mLx18; 0.2mL/0.5mL/1.5mL/ 2mLx24; 0.5mLx36; PCR8x4	
Run Time	30 sec - 99 min - or press HOLD for continuous operation		
Driving Motor	Brushless DC motor		
Safety Devices	Door interlock, maximum speed controls; motor overheating detection; internal diagnostics	Dual door interlock, maximum speed controls; motor overheating detection; internal diagnostics	
Power	Single-phase, AC110V-240V, 50Hz/60Hz, 3A	Single-phase, AC220V-240V, 50Hz/60Hz, 5A; AC110V-120V, 50Hz/60Hz, 8A	Single-phase, AC220V-240V, 50Hz/60Hz, 10A; AC110V-120V, 50Hz/60Hz, 10A
Noise level (dB)	≤56 (D2012)	≤58	≤56
Acceleration /Braking Time (sec)	25s ↑ 25s↓ (D2012)	25s ↑ ±25s ↓	25s± 25s ↓
Dimensions (mm)	(L) 255 x (D) 245 x (H) 140	(L) 280 x (D) 364 x (H) 266	(L) 338 x (D) 580 x (H) 324
Weight	6 kg	12 kg	30 kg
Additional Features	Speed/RCF switch; function; sound-alert function		





Available rotors and adapters:



Centrifuges	D2012	D3024 & D3024R				
						
Rotor P/N	A12-2	AS24-2	AS18-5	AS36-05	AS4-PCR8	AS12-V5
Cat No.	19400005	19400006	19400012	19400007	19400008	19400032
Max. speed (rpm)	15,000	15,000	15,000	15,000	15,000	15,000
Max. RCF (xg)	15,100	21,380	21,380	21,380	21,380	21,380
Rotor capacity	2mL/1.5mLx12 0.2mLx12 0.5mLx12	2mL/1.5mLx24 0.2mLx24 0.5mLx24	5mLx18	0.5mLx36 0.2mLx36	0.2mL/ PCR8x4	5mLx12
Rotor material	Aluminium alloy	Aluminium alloy				
Bio-safe (Bio sealing)		•	•	•	•	•
Rotor adapters			N/A		N/A	N/A
A02P2	•	•				
A05P2	•	•				
A02P05				•		

Available rotor adapters:



P/N	Cat No.	Descriptions
A02P2	19500001	2mL to 0.2mL rotor adapter, used with A12-2, A12-2P, AS24-2 and A24-2P rotors, 24pcs/pk
A05P2	19500002	2mL to 0.5mL rotor adapter, used with A12-2, A12-2P, AS24-2 and A24-2P rotors, 24pcs/pk
A02P05	19500003	0.5mL to 0.2mL rotor adapter, used with AS36-05 rotor, 36pcs/pk



Multi-Purpose Clinical Centrifuges

DM0636

Multi-Purpose Clinical Centrifuge

The DM0636 Multi-Purpose Clinical Centrifuge is ideal for the centrifugation of samples in clinical chemistry, cytology, research laboratories, and industrial laboratories.

Swing-out rotors and adapters are used for standard tubes up to 100mL at low speeds. This centrifuge can be used for tubes with a screw cap, blood collection tubes or urine tubes.

Features:

- Speed can be set from 300 rpm to a max. of 6000 rpm
- Maximum capacity: 100 mL x4
- 9 Acceleration/10 Brake speed settings guarantees effective sample separation
- Swing-out and fixed rotor options
- Vast range of accessories
- Automatic rotor identification
- Timer can be set for up to 99 minutes or hold for continuous operation
- Quiet
- Brushless DC motor is clean, maintenance free and safe



DM0636

Cat No:
DM0636

Specifications:

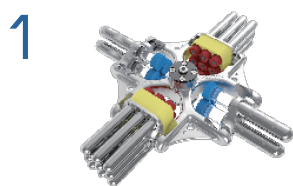
Speed range (rpm)	300 - 6000
Speed accuracy (rpm)	±20
Max. RCF (xg)	4170
Speed/rcf Switch	Yes
Run Time	1min - 99 min - or press HOLD (Continuous operation)
Display	LCD
Programs	9
Rotor Identification	Yes
Accel/braking ramps	9 ↑ / 10 ↓
Driving Motor	Brushless DC motor
Safety Devices	Door protection, imbalance protection, maximum speed controls, motor overheating detection



Multi-Purpose Clinical Centrifuges



Rotor Features:



Swing-out rotor, stainless steel body and stainless steel tubes
Major application: Clinical application, large particles, cells and cell debris
Max speed: 4000rpm, Max Rcf: 2830xg.

Cat No: S4-100
100mL x 4

Capacity in mL	3 - 10 mL Blood collection tube		10 mL Blood collection tube	12 mL urine tube	15 mL	50 mL	100 mL
φxL mm	13 x 75	13 x 100	15 x 100	17 x 105	17 x 120	34 x 100	38 x 104
Tubes per rotor	36	36	16	16	16	4	4



Fixed angled rotor, aluminium body and stainless steel tubes
Major application: Clinical application, large particles, cells and cell debris
Max speed: 5000 rpm, Max Rcf: 3300xg.

Cat No: 30-15
15mL x 30

Capacity	3 - 10 mL Blood collection tube	10 mL Blood collection tube	12 mL urine tube	15 mL
φxL mm	13 x 75	13 x 100	17 x 105	17 x 120
Tubes per rotor	30	30	30	30



Cat No: AS6-S0V
50mL x 6

Fixed angled rotor, aluminium body
Major application: Clinical application
Max speed: 6000 rpm; Max Rcf: 4610xg



Clinical centrifuges are widely used for the separation of serum, plasma, urea, blood samples and other routine applications in hospital and research laboratories.

Unique Features

Conforms to international safety standards and regulations:

- SCILOGEX clinical centrifuges passed the "explosion-proof" test CE, cTÜVus and FCC. MCA test according to IEC/EN61010-2-20
- Passed EN61010-2-101:2002 for in vitro diagnostic (IVD) medical equipment
- Strong plastic rotor
- Quiet operation
- Stable dual casing
- Brushless DC motor is quick and accelerates effortlessly



Precise control:

- CPU controls all operating parameters, including speed and time
- Accurate Speed
- Timer can be set from 30 seconds to 99 minutes (or hold for continuous operation)
- Timer starts once set speed is reached, for more accurate sample separation
- Gentle braking at low speeds with efficient separation

Ergonomic design:

- User-friendly large LCD display
- RPM or G-force can be set
- Parameters can be modified after set speed is reached
- Quick spins available by pressing and holding the PULSE key.
- Lid automatically releases when operation has stopped
- Easy-to-read display and sound alerts



The DM0412 & DM0412S clinical centrifuges are designed for small sample volumes. The centrifuges are supplied with an angled rotor that can hold up to 15mLx8 or 10mL/7mL/5mLx12 vacuum tubes.

They are widely used in medical and veterinary practices, specifically for the centrifugation of blood and urine samples. The centrifuges are also designed for environmental analysis for clarification of water and soil samples and for schools and other educational facilities as an aid in teaching.

DM0412 Clinical Centrifuge

Unique Features

- Accurate speed controls
- Digital LCD display
- RPM or G-force display
- Brushless DC motor
- Short spin function is used for quick spins, set by pressing and holding the PULSE key
- Lid is locked when in operation, lid automatically releases when rotor stops
- Self-diagnostic checks displays accumulative running time and last running parameters

Cat No:
91332341



DM0412



DMO412S Clinical Centrifuge

Features:

- Max. speed is 4,500 rpm
- Precise speed controls with efficient sample separation
- Fast acceleration and deceleration
- Suitable for 15 mL cell culture tubes and a variety of collection tubes
- Rotor capability :15mLx8 or 10mL/7mL/5mLx12
- LED display

Cat No:
94338342



DMO412S

Available rotor and adapters:

Rotor type	Available tubes	Tube quantity	Dimensions (ΦxL mm)	Adapters	Maximum speed (rpm)	Radius (cm)	Maximum RCF (xg)
R12 - 10P 	 15mL con	8	17 x 120		4,500	11	2490
	 1.5 - 5 mL vacu	12	13 x 82	 A10P15 & Plug	4,500	9.8	2218
	 4-7 mL vacu	12	13 x 105	 A10P15	4,500	11	2490
			16 x 75			9.8	2218
	 8.5 - 10 mL vacu	12	16 x 107		4,500	11	2490
	 2.7 - 3 mL (EU) collection tube	12	11 x 66	 A10P15 & Plug	4,500	9.8	2218
	 7.5 - 8.2 mL (EU) collection tube	12	15 x 92	 A10P15	4,500	11	2490

NOTE: R12-10P rotor is made of plastic and cannot be autoclaved or be put under UV irradiation

DM1424

Hematocrit Centrifuge

Our Hematocrit centrifuge with AC24P hematocrit rotor is used for volume fractions of erythrocytes in blood; designed for diagnostic purposes and doping tests. It is also used to derive plasma for the bilirubin content of the blood of neonates. ??

Hematocrit centrifuges come with A24-2P tube rotors and is used for 1.5/2mL tubes; which can be used for DNA and RNA extraction.

Cat No:
91232552



DM1424
AC24P hematocrit rotor
kit with reading disk

Features:

- Speed range of 200 - 14000 rpm, Max. RCF 18620xg
- Precise speed and time controls with efficient sample separation
- LCD digital display
- Brushless DC motor
- Pulse operation for quick spins
- Rotor capacity: Hematocrit rotor: 24 capillary Max. speed: 12000 rpm
- Tube rotor: 1.5/2mLx24 Max. speed: 14000 rpm



Clinical Centrifuges

Specifications:

	DM0412	DM0412S	DM1424
Cat Number	91332341	94338342	91232552
Max. Speed (rpm)	300 - 4500, increment: 100	4500, increment: continue	200 - 14000, increment: 10
Max. RCF (xg)	2490 xg, increment: 100xg	2490 xg, increment: continue	18620 xg, increment: 10xg
Speed Accuracy (rpm)	±20	-	±30
Rotor Capacity	10mL/ 7mL/ 5mLx12; 15mLx8	10mL/ 7mL/ 5mLx12; 15mLx8	Tube rotor: 1.5/2mLx24 (14000rpm); Hematocrit rotor: Capillary tubes x24 (12000rpm)
Run Time	30 sec - 99 min or press HOLD for continuous operation	1 sec - 99 min	30 sec - 99 min or press HOLD for continuous operation
Motor	Brushless DC motor	DC motor	Brushless DC motor
Safety Devices	Door interlock, maximum speed controls; internal diagnostics	Door interlock, maximum speed controls	Door interlock, maximum speed controls; motor overheating detection; internal diagnostics; automatic rotor identification
Power	Single-phase, 110V-240V, 50Hz/60Hz, 3A	Single-phase, 220V-240V, 50Hz/60Hz, 3A; 110V-120V, 50Hz/60Hz, 3A	Single-phase, 220V-240V, 50Hz/60Hz, 5A; 110V-120V, 50Hz/60Hz, 5A
Acceleration /Braking Time (Sec)	20s ↑ 20s ↓	25s ↑ 25s ↓	20s ↑ 20s ↓
Dimensions (mm)	(L)255 x (W)245 x (H)140	(L)255 x (W)245 x (H)140	(L)280 x (W)364 x (H)266
Weight	6 kg	6 kg	10 kg
Additional Features	Speed/RCF switch; Short-time run function; sound-alert function	Sound-alert function LED display	Speed/RCF switch; Short-time run function; sound-alert function





Available rotors and adapters:



Rotor P/N	A12-10P	A12-10P	A24- 2P	AC24P
Cat Number	19200348	19200358	19400013	19400023
Centrifuges	DM0412	DM0412E	DM1424	DM1424
Max. Speed (rpm)	4500	4500	14000	12000
Max. RCF (xg)	2490	2490	18620	13680
Rotor Capacity	15 mL x 8 10mL/5mL/1mLx12	15 mL x 8 10mL/5mL/1mLx12	2mL/1.5mL x 24 0.2mL x 24 0.5mL x 24	Capillary tubes x 24
Rotor Material	Durable and robust plastic	Durable and robust plastic	Durable and robust plastic	Durable and robust plastic
Rotor Adapters				N/A
A02P2			•	
A05P2			•	
A10P15 & Mat	•	•	•	

Available rotor adapters:



P/N	Cat. No.	Descriptions
A02P2	19500001	2mL to 0.2mL rotor adapter, used with A12-2, A12-2P, AS24-2 and A24-2P rotors, 24pcs/pk
A05P2	19500002	2mL to 0.5mL rotor adapter, used with A12-2, A12-2P, AS24-2 and A24-2P rotors, 24pcs/pk
A10P15	19200027	Rotor adapter, used with A12-10P, 12pcs/pk
A10P15 plug	19200028	Rotor adapter mat, used with A10P15, 12pcs/pk



GPE Scientific Ltd,
Greaves Way Industrial Estate,
Stanbridge Road,
Leighton Buzzard,
Bedfordshire,
LU7 4UB, ENGLAND.
Tel: +44(0)1525 382277
Fax: +44(0)1525 382263
Website: www.gpescientific.co.uk