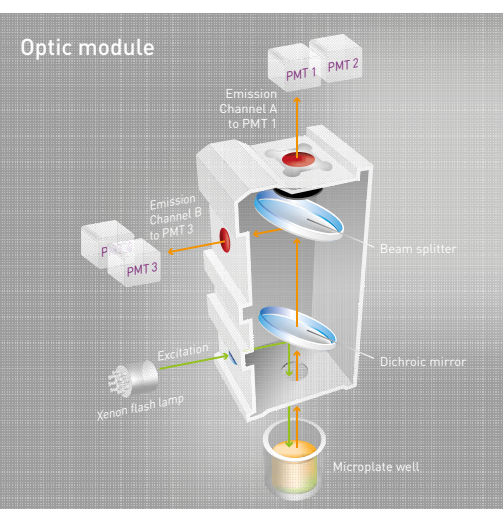


UV/vis FI LUM TRF TR-FRET FP AS 3456 well



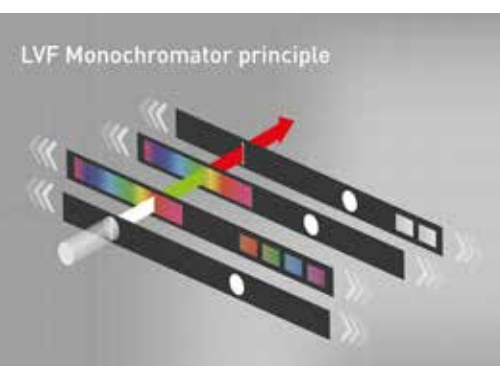
- Most sensitive reader in fluorescence intensity and polarization
- Fastest read times with Simultaneous Dual Emission detection
- Full absorbance spectra from 220-1000 nm in < 1 sec/well
- Top and bottom reading with focus adjustment (0.1 mm z-height)
- All microplate formats up to 3456-well
- New generation TRF laser for highest performance
- AlphaScreen®/ AlphaLISA® laser
- Up to two on-board reagent injectors
- Three integrated microplate barcode readers
- Advanced Assay Stability system



UV/vis FI LUM TRF TR-FRET FP AS 1536 well



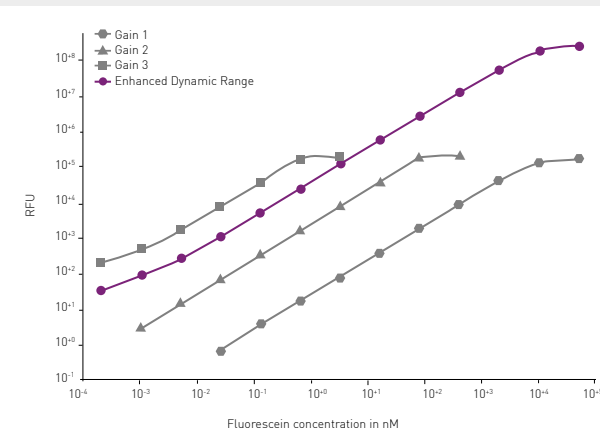
- Patented Linear Variable Filter (LVF) Monochromators™
- Continuously adjustable bandwidths (8-100 nm)
- Increased sensitivity over conventional monochromators
- Enhanced Dynamic Range technology and full-plate auto-focus
- Dedicated detectors for luminescence and far-red fluorescence
- Full absorbance spectra from 220-1000 nm in < 1 sec/well
- All microplate formats up to 1536-well
- Up to two on-board reagent injectors
- AlphaScreen®/AlphaLISA® laser
- Up to two integrated microplate barcode readers



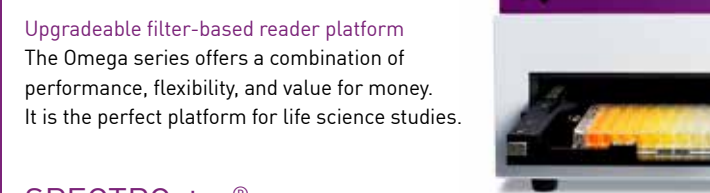
UV/vis FI LUM TRF TR-FRET FP 384 well



- Patented Linear Variable Filter (LVF) Monochromators
- Continuously adjustable bandwidths (8-100 nm)
- Enhanced Dynamic Range technology and full-plate auto-focus
- Full absorbance spectra from 220-1000 nm in < 1 sec/well
- All microplate formats up to 384-well
- Full top/bottom reading capability with one click switch
- Integrated fluorophore library for easy wavelength selection
- Plate shaking and incubation up to 45°C or 60°C
- Reagent injector module with integrated heater and stirrer
- Reduced footprint



UV/vis FI LUM 384 well



- Absorbance, fluorescence intensity and luminescence detection
- Spectrometer-based absorbance with 220-1000 nm spectral scans in < 1 sec/well, or filter-based absorbance with range 240-740 nm
- Simultaneous Dual Emission for FRET and BRET assays
- Reagent injectors, plate shaking and incubation up to 45°C or 65°C



UV/vis 1536 well

- Full absorbance spectrum 220-1000 nm detection in < 1 sec/well
- All microplate formats up to 1536-well
- Integrated cuvette port, plate shaking and incubation up to 45°C



NEPHELOstar® Plus

Unique laser-based nephelometer



Light-scattering and turbidity measurements

- Uses light scattering for detection of insoluble particles
- All microplate formats up to 384-well
- Up to two onboard reagent injectors
- Shaking and incubation up to 45°C
- Stacker and robot compatible



Accessories

Atmospheric Control Unit (ACU)

Optimal environment for any live cell-based assay

- Active regulation of O₂ and CO₂ in the microplate reader
- Available for CLARIOstar Plus, VANTastar, Omega series, and NEPHELOstar Plus



LVis Plate

Microplate for low-volume measurements

- Sixteen microdrop well sites for 2 µL samples
- Horizontal standard cuvette position
- NIST-traceable optical filters for precision and accuracy tests
- Compatible with all spectrometer-based readers

Stacker

Mid-throughput microplate handling

- Rapid loading, unloading, restacking for up to 50 microplates
- Continuous load feature and barcode reader
- Accommodates all microplate formats
- Compatible with CLARIOstar Plus, PHERAstar FSX, Omega series, and NEPHELOstar Plus

Software

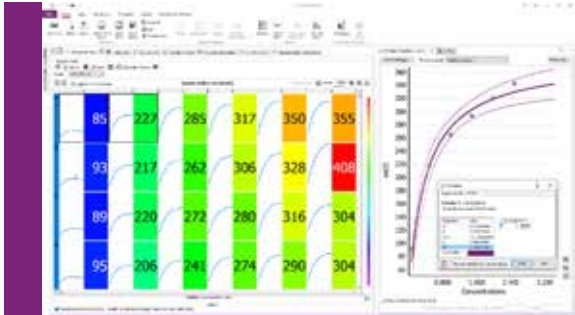
Powerful software package for data acquisition and analysis

Our comprehensive software package provides all the tools needed to both effectively acquire and analyse data. Compliant with FDA 21 CFR part 11 regulation, the software can be installed on as many computers as required, without the need to purchase additional licenses.

Reader Control

An intuitive interface for effortless data acquisition, Reader Control is a versatile platform for the straightforward execution of routine tasks and the optimisation of complex operations. Key features include:

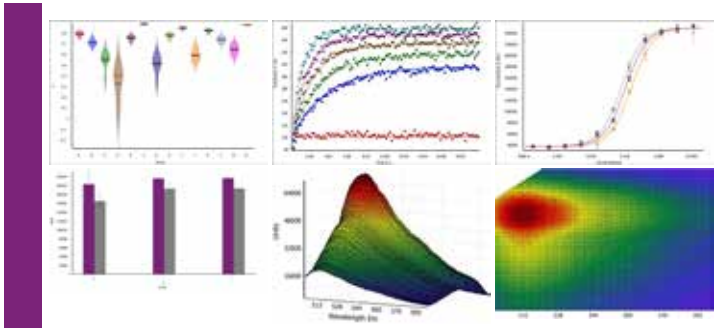
- More than 30 predefined assay protocols
- Quick-start button to get started quickly
- Real-time data display during measurement
- Wizard for simplified multiplexing
- Multiple well-scanning options for heterogeneous samples
- Data export to Excel, dBase, or ASCII format
- ActiveX, DDE and SiLA interfaces for easy integration



MARS

The MARS data analysis package offers multiple data reduction possibilities combined with simple and effective options to display, extract and export results. Key features include:

- Automated one-click assay analysis
- Data display as bar charts, box plots, violin plots, etc.
- Automatic DNA/RNA concentration determination
- Enzyme kinetic analysis using various models
- Signal interpolation using linear or cubic spline interpolation
- Linear, 4- / 5-parameter, polynomial and user-defined curve fits
- Assay performance: Z', %CV, Signal-to-Blank, Signal-to-Noise ... and many more



www.bmglabtech.com

Headquarters Germany

BMG LABTECH GmbH
Allmendgrün 8
77799 Ortenberg
Tel. +49 781 96968 -0
sales@bmglabtech.com

Australia

BMG LABTECH Pty. Ltd.
2/24 Carbine Way
Mornington, Victoria 3931
Tel. +61 3 5973 4744
australia@bmglabtech.com

France

BMG LABTECH SARL
7, Rue Roland Martin
94500 Champigny s/Marne
Tel. +33 1 48 86 20 20
france@bmglabtech.com

Japan

BMG LABTECH JAPAN Ltd.
2F TS-1 Building
1-6-2, Shimo-cho
Omiya-ku
330-0844 Saitama City
Tel. +81 48 647 7217
japan@bmglabtech.com

UK

BMG LABTECH Ltd.
8 Bell Business Park
Smeaton Close
Aylesbury
Bucks
HP19 8JR
Tel. +44 1296 336650
uksales@bmglabtech.com

USA

BMG LABTECH Inc.
13000 Weston Parkway
Suite 109
Cary, NC 27513
Tel. +1 877 264 5227
usa@bmglabtech.com

Instrumentation Guide



HTRF is a registered trademark of Cisbio Bioassays.
DLR is a trademark of Promega Corporation.
LanthaScreen is a registered trademark of Invitrogen Corp.
Transcreeper is a registered trademark of BellBrook Labs.
AlphaScreen and AlphaLISA are registered trademarks of PerkinElmer, Inc.
Mycoalert is a trademark of Lonza.
© 2023 All rights reserved. All logos and trademarks are the property of BMG LABTECH.