

VIALS



CG-4900

CG-4900 VIAL, SAMPLE, CLEAR, TEFLON LINED CAP

Clear sample vials packaged in convenient LAB-PACS of 144 pieces. Made from Type I borosilicated glass. Full height partitions minimize breakage. Solid Teflon lined caps. Open top caps with septa are available under part number CG-4910.

Part Number	Vial Size OD x Height (mm)	Vial Capacity (mL)	Screw Thread Size
CG-4900-01	15 x 45	4	13-245
CG-4900-02	17 x 60	8	15-425
CG-4900-03	21 x 70	16	18-400
CG-4900-04	28 x 57	20	24-400
CG-4900-05	28 x 70	30	24-400
CG-4900-06	28 x 95	40	24-400



CG-4905

CG-4905 VIAL, SAMPLE, AMBER, TEFLON LINED CAP

Amber sample vials packaged in convenient LAB-PACS of 144 pieces. Made from Type I borosilicated glass. Full height partitions minimize breakage. Solid Teflon lined caps. Open top caps with septa are available under part number CG-4910.

Part Number	Vial Size OD x Height (mm)	Vial Capacity (mL)	Screw Thread Size
CG-4905-01	15 x 45	4	13-245
CG-4905-02	17 x 60	8	15-425
CG-4905-03	21 x 70	16	18-400
CG-4905-04	28 x 57	20	24-400
CG-4905-05	28 x 70	30	24-400
CG-4905-06	28 x 95	40	24-400



CG-4910

CG-4910 OPEN TOP SCREW CAP, WITH PTFE LINED SEPTA

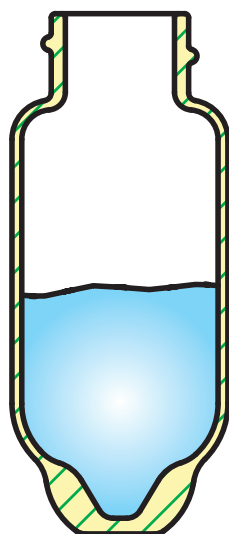
Black open top polypropylene screw cap supplied with PTFE faced 0.060" silicone septa. Supplied in packages of 144.

Part Number	Screw Thread Size
CG-4910-01	13-425
CG-4910-02	15-425
CG-4910-03	18-400
CG-4910-04	24-400

CG-4915 VIAL, CD™, SCREW CAP, HIGH RECOVERY

These CD™ vials have a unique Patented* conical interior bottom permits the contents to completely drain to the center bottom of the vial. Maximum extraction of the contents can be accomplished using a syringe or micropipette. Available complete with open top screw caps having a PTFE faced silicone septa or vials only. NOTE: Vials and caps are shipped together but NOT assembled. The 1.5 through 10 mL have a bottom as shown in the photo, while the 20 through 60mL have a bottom as illustrated in the line art.

- AVAILABLE IN 1.5, 4.0, 5.0, 10.0, 20, 33, 40 and 60mL CAPACITIES
- LESS THAN 4 µL OF DEAD VOLUME



**20-60mL
Vial Bottom Style**



CG-4915

Vials Complete with Open Top Screw Cap and PTFE Septa:

Part Number	Vial Capacity (mL)	Screw Cap Size	Dimensions O.D. x Height (mm)	Package Quantity
CG-4915-01	1.5	9mm	12 x 32	100
CG-4915-02	1.5	13-425	13 x 44	100
CG-4915-03	4.0	13-425	15 x 51	100
CG-4915-04	5.0	15-425	17 x 51	100
CG-4915-05	10.0	18-400	21 x 61	100
CG-4915-06	20.0	22-400	28 x 67	100
CG-4915-07	33.0	24-414	28 x 88	100
CG-4915-08	40.0	24-414	28 x 103	100
CG-4915-09	60.0	24-414	28 x 143	100

Vials ONLY:

Part Number	Vial Capacity (mL)	Screw Cap Size	Dimensions O.D. x Height (mm)	Package Quantity
CG-4915-21	1.5	13-425	13 x 44	100
CG-4915-22	4.0	13-425	15 x 51	100
CG-4915-23	5.0	15-425	17 x 51	100
CG-4915-24	10.0	18-400	21 x 60	100
CG-4915-25	20.0	22-400	28 x 67	100
CG-4915-26	33.0	24-414	28 x 88	100
CG-4915-27	40.0	24-414	28 x 103	100
CG-4915-28	60.0	24-414	28 x 143	100

PLEASE NOTE: Vials are available in Amber for light sensitive materials. Please contact us for details.

(Patent Number D454,397 S)