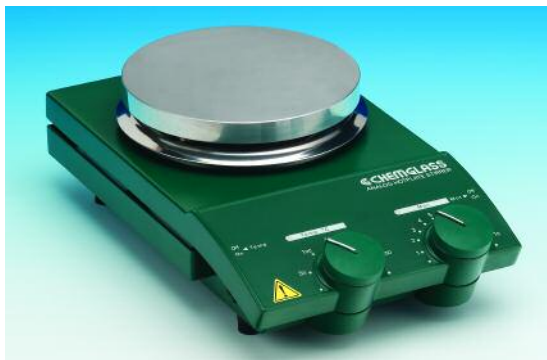


HOT PLATE STIRRERS



CG-1990-14

CG-1990 IKA® RCT BASIC IKAMAG® MAGNETIC HOT PLATE STIRRER WITH SAFETY CONTROL

The NEW RCT Basic IKAMAG® magnetic hot plate stirrers incorporate adjustable safety circuit and are indisputably at the top of their class in worldwide technology. The front panel design allows easy control and reading of both the speed and temperature features. The heating plate is 135mm diameter and made from highly polished Silumin for optimum heat transfer. The IKAMAG® hot plate stirrers are protected against liquid and vapor penetration by an enclosed assembly (IP 42) which guarantees long service life. The overhanging corner protects the instrument's plugs and electrical connections from spills.

Magnetic Stirrer:

H ₂ O Stirring Quantity MAX (L)	20
Motor Rating Input/Output (W)	12/5
Speed Display	Scale
Speed Range (RPM)	0 - 1,100
Stirring Bar Length MAX (mm)	80

Heating Function:

Heat Output (W)	600
Temperature MAX (° C)	300
Heat Control Accuracy, Plate Only (K)	± 10
Use With Temperature Sensor	CG-1995-01
Control Accuracy with Temperature Sensor (K)	± 1
Temperature Constancy In Medium (K)	± 1

General Data:

Dimensions W x H x D (mm)	160 x 90 x 280
Weight (kg/lbs)	2.3/5.0
Power Requirements	115V, 50/60 Hz

Part

<u>Number</u>	<u>Description</u>
CG-1990-14	RCT Basic IKAMAG® Magnetic Hot Plate Stirrer



CG-1995-10

OPTIONAL DETACHABLE PROBE, PFA COATED AND EXTENSION CABLE

PFA coated probe for use only with ETC contact thermometer. Allows direct insertion of probe into flask or reaction contents. **PLEASE NOTE: PFA COATED PROBES WILL NOT FIT THERMOWELLS IN CG-1992 OPTITHERM® BLOCKS, CG-1991-P PIE-BLOCKS® OR CG-1991 REACTION BLOCKS.**

Part

<u>Number</u>	<u>Description</u>
CG-1995-12	Detachable Probe, PFA Coated
CG-1995-10	Extension Cable for ETC Contact Thermometer To Detachable Probe, 1m Long

SEE CG-1995 FOR CONTACT THERMOMETERS AND OTHER ACCESSORIES.

HOT PLATE STIRRERS

CG-1990 IKA® RET CONTROL VISC IKAMAG® MAGNETIC HOT PLATE STIRRER WITH SAFETY CONTROL

The NEW RET Control Visc IKAMAG® magnetic hot plate stirrers incorporate two (2) adjustable safety circuits and are indisputably at the top of their class in worldwide technology. A hot warning display indicating presence of any residual heat when the unit is switched off and a stirring bar crack detector are some of the newest features. Unit can be PC controlled via the RS 232 interface and analog output. The front panel design with easy-to-read backlit LCS display allows easy control and reading of both the speed and temperature features. The heating plate is 135mm diameter and made from stainless steel for optimum heat transfer. The IKAMAG® hot plate stirrers are protected against liquid and vapor penetration by an enclosed assembly (IP 42) which guarantees long service life. The overhanging corner protects the instrument's plugs and electrical connections from spills.

Magnetic Stirrer:

H ₂ O Stirring Quantity MAX (L)	20
Motor Rating Input/Output (W)	12/5
Speed Display	LCD
Speed Range (RPM)	0 - 1,500
Stirring Bar Length MAX (mm)	80

Heating Function:

Heat Output (W)	600
Temperature Range (° C)	RT to 340
Heat Control	Stepless
Heat Control Accuracy, Plate Only (K)	± 1
Speed Control	Stepless
Adjustable Safety Circuit MIN (° C)	50
Adjustable Safety Circuit MAX (° C)	350
Use With Temperature Sensor	CG-1995-02
Control Accuracy with Temperature Sensor (K)	± 0.2

General Data:

Dimensions W x H x D (mm)	160 x 97 x 280
Weight (kg/lbs)	2.8/6.2
Permissible Ambient Temperature (° C)	5 to 40
Permissible Relative Moisture (%)	80
RS 232 Interface	Yes
Analog Output	Yes
Power Requirements	115V, 50/60 Hz
Power Input (W)	630

Part

Number	Description
CG-1990-35	RET Control Visc IKAMAG® Magnetic Hot Plate Stirrer, Complete Package To Include 1ea:
CG-1995-02	PT-100 Temperature Sensor
CG-1995-05	Boss Head
CG-1995-06	S.S. Vertical Support Rod
CG-1995-07	S.S. Holding Rod

PT-100 TEMPERATURE SENSOR, PFA COATED

The PT-100 stainless steel temperature sensor with PFA Coating is used with the RET Control Visc hot plate stirrer. Allows direct insertion of probe into flask or reaction contents. **PLEASE NOTE: PFA COATED PROBES WILL NOT FIT THERMOWELLS IN CG-1992 OPTITHERM® BLOCKS, CG-1991-P PIE-BLOCKS® OR CG-1991 REACTION BLOCKS.**

Part

Number	Description
CG-1995-14	PT-100 Temperature Sensor, PFA Coated



CG-1990-35

OPTITHERM™ REACTION BLOCK



CG-1992 OPTITHERM™ REACTION BLOCK, ROUND BOTTOM

Optitherm™ blocks provide a SAFE and cost effective solution for replacing your existing oil baths and heating mantles. The innovative Teflon shield on the unit keeps the exterior surface area at a temperature that is safe to touch. For example the Teflon shield would be approximately 80° C on a 100mL round bottom flask that is heated to 180° C.

There are two different OptiTherm™ sets that are available. The OPT100 has a base unit for a 100mL round bottom flask and optional inserts for 10, 25 and 50mL flasks. The OPT500 has a base unit for 500mL flasks and an optional insert for 200, 250, and 300mL round bottom flasks. The flask inserts are color coded for easy identification. NOTE: Flask Inserts Must be Purchased Separately.



CG-1992

- User Safety- Teflon Shield Prevents Potential Burns And Provides A Safe Contact Area
- Fits All 135mm Diameter Hotplate/Stirrers
- Aluminum Construction Provides Excellent Heat Transfer And Does Not Interfere With The Magnetic Field
- Great Visibility Of The Reaction
- Designed To Operate At Temperatures Up To 180° C
- Excellent Heat Distribution
- Color Coded Flask Inserts from 10mL to 250mL
- Eliminates Issues Associated With Oil Baths Such As Flash Points, Spattering, Or Clean Up

Part Number	Description	Insert Sizes Available
CG-1992-10	OPT100 RBF Reaction Block, 100mL	10, 25, and 50mL
CG-1992-50	OPT500 RBF Reaction Block, 500mL	250mL

ACCESSORIES

Part Number	Description	For Use With Block
CG-1992-12	10mL Flask Insert, Anodized Gold Aluminum	OPT100
CG-1992-14	25mL Flask Insert, Anodized Blue Aluminum	OPT100
CG-1992-16	50mL Flask Insert, Anodized Red Aluminum	OPT100
CG-1992-53	200mL Flask Insert, Anodized Turquoise Aluminum	OPT500
CG-1992-54	250mL Flask Insert, Anodized Clear Aluminum	OPT500
CG-1992-55	300mL Flask Insert, Anodized Black Aluminum	OPT500



OptiTherm® is a Registered Trademark of Chemglass, Inc.

HOT PLATE ACCESSORIES

CG-1995 ACCESSORIES FOR IKA® HOT PLATE

OPTICHEM® ELECTRONIC CONTACT THERMOMETER

OptiChem® electronic contact thermometer for use with CG-1990-13 IKA® hot plate stirrer and CG-1993-20 OptiChem® hot plate stirrer. Supplied with stainless steel sensor, 3mm OD x 250mm long, and coiled cord 24" long. Extension cords are available in 40" and 98" lengths. Please call for details.

Part Number
CG-1995-01



CG-1995-01

PT-100 TEMPERATURE SENSOR

The PT-100 stainless steel temperature sensor is used with the CG-1990-10 IKA® hot plate stirrer.

Part Number
CG-1995-02



CG-1995-02

BOSS HEAD

Boss head permits mounting of any option to the vertical support rod CG-1995-06.

Part Number
CG-1995-05



CG-1995-05

VERTICAL SUPPORT ROD

This stainless steel vertical support rod is 10mm OD x 450mm in length. One end is threaded to fit into back right hand corner of IKA® hot plate stirrer.

Part Number
CG-1995-06



CG-1995-06

HOLDING ROD

A 10mm x 110mm stainless steel rod used with the CG-1995-01 OptiChem® electronic contact thermometer or CG-1995-02 PT-100 temperature sensor.

Part Number
CG-1995-07

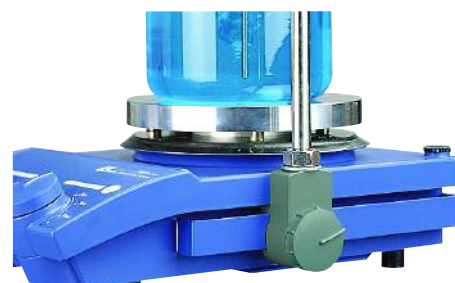


CG-1995-07

SUPPORT ROD SLIDING MOUNT

Sliding mount attaches to side of hot plate stirrers allowing the CG-1995-06 vertical support rod to be positioned anywhere along the length of the stirrer. NOTE: CG-1995-06 vertical support rod not supplied, must be ordered separately.

Part Number
CG-1995-08



CG-1995-08

EXTENSION PLATE

Aluminum extension plate fits on top of the CG-1990-10 and CG-1990-13 IKA® hot plate stirrers as well as the CG-1993-20 OptiChem® hot plate stirrer. Increases the surface area from 135mm to 200mm.

Part Number
CG-1995-09



CG-1995-09

Visit Our Web Site: www.gpelimited.co.uk

HOT PLATE STIRRERS



CG-1999-C-45



CG-1995-11



CG-1990-A

CG-1999-C IKA® CERAMIC TOP STIRRER, DIGITAL

Chemglass is pleased to announce the NEW IKA® Ceramag 7 digital hot plate stirrer. This economically priced unit has most of the features of the top of the line IKA® stirrers along with a ceramic top. These features include:

Specifications:

H2O Stirring Quantity MAX (L):	10
Plate Dimensions (in):	7 x 7
Stirring Speed (RPM):	100 to 1,500
Temperature Range (°C):	50 to 500
Temperature Display:	Digital
Electrical:	120V, 50/60 Hz
Weight (lbs):	11

Hot Plate Stirrer:

<u>Part Number</u>	<u>Description</u>
CG-1999-C-45	Ceramic Hot Plate Stirrer ONLY

Accessories:

<u>Part Number</u>	<u>Description</u>
CG-1995-11	Temperature Probe, ETS-D5
CG-1995-05	Boss Head
CG-1995-06	Vertical Support Rod
CG-1995-07	Horizontal Holding Rod

CG-1990-A IKA® RCT BASIC IKAMAG® MAGNETIC HOT PLATE STIRRER WITH SAFETY CONTROL

NEW and improved IKA® RCT Basic hot plate stirrer with safety control feature. This economically priced unit has many of the features of the top of the line IKA® stirrers.

Features:

- Set Safety Temperature Limit Displayed Digitally
- Exact Temperature And Speed Setting Via Digital Display, Even When Switched Off
- Hot Top Indicator >> Hot Surface Warning To Prevent Burns!
- Indicator Lights For Both Heating And Stirring Modes
- Enclosed Housing Prevents Liquids And Vapors From Damaging Internal Components
- Highly Polished Aluminium Heating Plate For Optimum Heat Transfer

Specifications:

H2O Stirring Quantity MAX (L)	20
Plate Diameter (mm):	135
Stirring Speed (RPM):	50 to 1,200
Temperature Range (°C):	50-360
Overall Dimensions, W x D x H (mm):	165 x 275 x 85
Electrical	115V, 60 Hz
Weight (lbs):	5.5

<u>Part Number</u>	<u>Description</u>
CG-1990-A-10	RCT Basic IKAMAG® Magnetic Hot Plate Stirrer, Complete Package To Include 1ea:

CG-1990-A-15	PT 1000 Temperature Sensor
CG-1995-05	Boss Head
CG-1995-06	S.S. Vertical Support Rod
CG-1995-07	S.S. Holding Rod

CORNING PC-400D HOT PLATE, DIGITAL, 5" X 7"

Corning Pyroceram® top, low profile hot plate. Microprocessor design provides superb linear control. Software provides more power when needed to assure optimal performance. Digital LED temperature display is adjustable in 5°C increments and blinks until set temperature is reached. Bright LED HOT TOP icon lights up when top plate is over 60°C, even when heat control is turned off. A separate temperature sensor provides foolproof power cutoff in catastrophic situations. Temperature range: 5-550°C. Dimensions: 4.4" H x 7.8" W x 10.9" D. Weight: 6lbs. **PLEASE NOTE: THE 230V UNIT COMES WITH UK PLUG.**

Part Number	Power Requirements	Top Size (in)
CG-8910-400D	120V, 60Hz, 628W, 5.3A	5 x 7
CG-8912-400D	230V, 50Hz, 628W, 2.7A	5 x 7
CG-8914-400D	100V, 60Hz, 548W, 5.5A	5 x 7



PC-400D

CORNING PC-600D HOT PLATE, DIGITAL, 10" X 10"

Corning Pyroceram® top, low profile hot plate. Microprocessor design provides superb linear control. Software senses the requirements of your application providing more power as needed to assure optimal performance. LED indicator lights let you assess units status at a glance. Indicator light blinks a warning when top is too hot to touch. A separate temperature sensor provides foolproof power cutoff in catastrophic situations. Extra-large knobs with easy-to-read numbers provide better control. Temperature range: 77-1022°F (25-550°C). Dimensions: 4.8" H x 10.5" W x 14.4" D. Weight: 10lbs. **PLEASE NOTE: THE 230V UNIT COMES WITH UK PLUG.**

Part Number	Power Requirements	Top Size (in)
CG-8916-600D	120V, 60Hz, 1043W, 8.7A	10 x 10
CG-8918-600D	230V, 50Hz, 1043W, 4.5A	10 x 10
CG-8920-600D	100V, 60Hz, 1043W, 10.5A	10 x 10



PC-600D

CORNING SCHOLAR™ 170 HOT PLATE, 5" x 5"

An economically priced hot plate that has a white enameled steel top plate that provides heat transfer up to 360°C. Dual heat shields dissipate heat and keep the case cool to the touch. Compact size saves on bench space. UL/CUL approved, one year warranty. Temperature range: 77-672°F (25-360°C). Dimensions: 4" H x 5" W x 5" D. Weight: 3lbs. **PLEASE NOTE: THE 230V UNIT COMES WITH UK PLUG.**

Part Number	Power Requirements	Top Size (in)
CG-8922-170	120V, 60Hz, 250W, 2.1A	5 x 5
CG-8924-170	230V, 50Hz, 250W, 1.1A	5 x 5
CG-8926-170	100V, 60Hz, 250W, 2.5A	5 x 5



HOT PLATES



PC-220

CORNING PC-220 HOT PLATE STIRRER, 4" x 5"

Corning Pyroceram® top, low profile hot plate stirrer. Provides superb linear control for both heating and stirring. Software senses the requirements of your application and provides more power as needed. A closed-loop stirring control monitor regulates the stirring speed. The micro-processor automatically adjusts the motor strength to accommodate your solution. LED indicator lights let you assess units status at a glance. Indicator light blinks a warning when top is too hot to touch. Sensor provides power cutoff in catastrophic situations. Temperature range: 77-1022°F (25-550°C). Dimensions: 4.4" H x 5.8" W x 7.3" D. Weight: 5lbs. **PLEASE NOTE: THE 230V UNIT COMES WITH UK PLUG.**

Part Number	Power Requirements	Top Size (in)	Stir Range (RPM)
CG-8930-01	120V, 60Hz, 283W, 2.4A	4 x 5	60-1,100
CG-8930-02	230V, 50Hz, 288W, 1.3A	4 x 5	60-1,100
CG-8930-03	100V, 60Hz, 280W, 2.8A	4 x 5	60-1,100



CORNING PC-420D HOT PLATE STIRRER, DIGITAL, 5" X 7"

Corning Pyroceram® top, low profile hot plate stirrer. Digital LED temperature display is adjustable in 5°C increments and blinks until set temperature is reached. Bright LED HOT TOP icon lights up when top plate is over 60°C, even when heat control is turned off. A separate temperature sensor provides foolproof power cutoff in catastrophic situations. Temperature range: 5-550°C. Digital LED speed display gives you better control of your stirring process. A stronger, larger magnet improves stir bar coupling and automatic ramp up speed adjustment minimizes decoupling. Dimensions: 4.4" H x 7.8" W x 10.9" D. Weight: 7lbs. **PLEASE NOTE: THE 230V UNIT COMES WITH UK PLUG.**

Part Number	Power Requirements	Top Size (in)	Stir Range (RPM)
CG-8932-01D	120V, 60Hz, 698W, 5.9A	5 x 7	60-1,150
CG-8932-02D	230V, 50Hz, 698W, 3.1A	5 x 7	60-1,150
CG-8932-03D	100V, 60Hz, 623W, 6.3A	5 x 7	60-1,150



PC-420

PC-620

CORNING PC-620D HOT PLATE STIRRER, DIGITAL, 10" X 10"

Corning Pyroceram® top, low profile hot plate stirrer. Digital LED temperature display is adjustable in 5°C increments and blinks until set temperature is reached. Bright LED HOT TOP icon lights up when top plate is over 60°C, even when heat control is turned off. A separate temperature sensor provides foolproof power cutoff in catastrophic situations. Temperature range: 5-550°C. Digital LED speed display gives you better control of your stirring process. A stronger, larger magnet improves stir bar coupling and automatic ramp up speed adjustment minimizes decoupling. Dimensions: 4.8" H x 10.6" W x 15.8" D. Weight: 11.5lbs. **PLEASE NOTE: THE 230V UNIT COMES WITH UK PLUG.**

Part Number	Power Requirements	Top Size (in)	Stir Range (RPM)
CG-8934-01D	120V, 60Hz, 1113W, 9.3A	10 x 10	60-1,150
CG-8934-02D	230V, 50Hz, 1113W, 4.9A	10 x 10	60-1,150
CG-8934-03D	100V, 60Hz, 1113W, 11.2A	10 x 10	60-1,150